



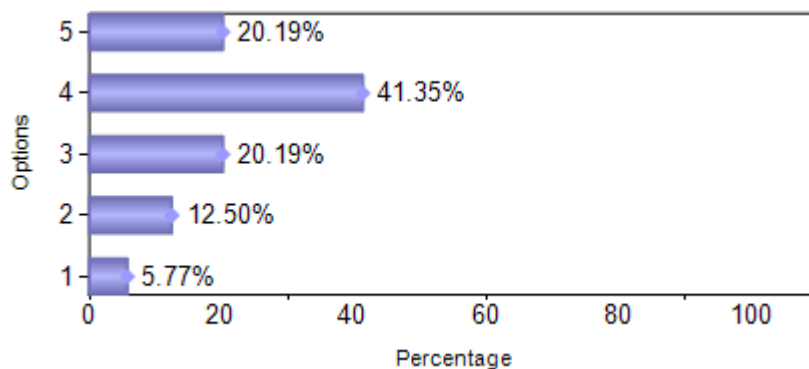
Presidency College
 Reaccredited 'A+' by NAAC
 NIRF Top 100 Ranked College
 Kempapura, Hebbal, Bengaluru – 560024
 www.presidencycollege.ac.in

FEEDBACK ON CURRICULUM

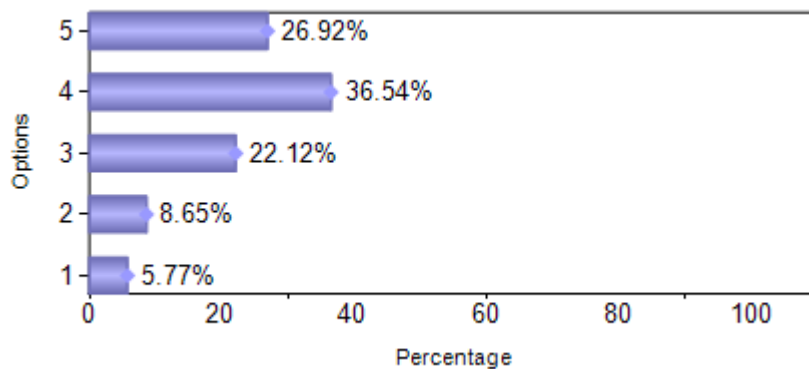
M.C.A. (January 2018 to May 2018)

| Sno | Question | 1 | 2 | 3 | 4 | 5 |
|--------------|---|-----------|-----------|------------|------------|------------|
| 1 | Curriculum delivery by faculty is related to real life applications | 6 | 13 | 21 | 43 | 21 |
| 2 | Lab classes / courses are given equal importance to | 6 | 9 | 23 | 38 | 28 |
| 3 | Scheme of valuation is discussed after each test / examination | 8 | 8 | 22 | 40 | 26 |
| 4 | Electives are offered in terms of relevance to specialization | 13 | 4 | 27 | 35 | 25 |
| 5 | Faculty gives us enough reference books to refer to in the subject | 7 | 7 | 24 | 40 | 26 |
| 6 | Syllabus is overloaded and hence rushed with in class. | 7 | 9 | 22 | 37 | 29 |
| 7 | Value based learning is integrated in the curriculum and prefinal ethics is discussed in class. | 6 | 6 | 27 | 43 | 22 |
| 8 | Curriculum approach is inter-disciplinary for approach. | 5 | 8 | 21 | 46 | 24 |
| 9 | Assignments are given in time and rubrics shared for assessment | 4 | 8 | 24 | 41 | 27 |
| 10 | Curriculum delivery is done by sharing course handout in time, rubrics are explained | 8 | 7 | 24 | 40 | 25 |
| Total | | 70 | 79 | 235 | 403 | 253 |

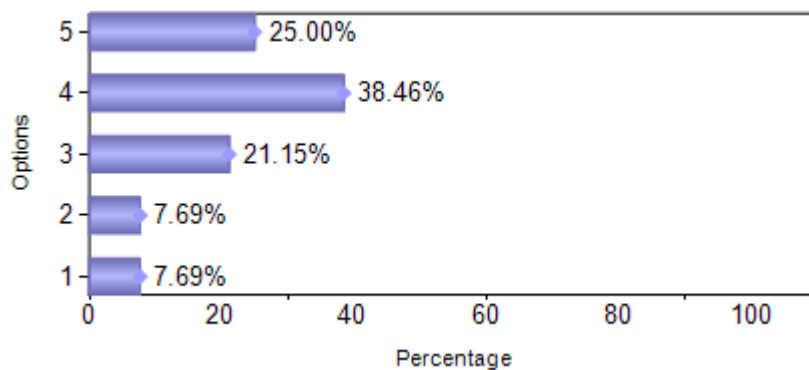
1)Curriculum delivery by faculty is related to real life applications



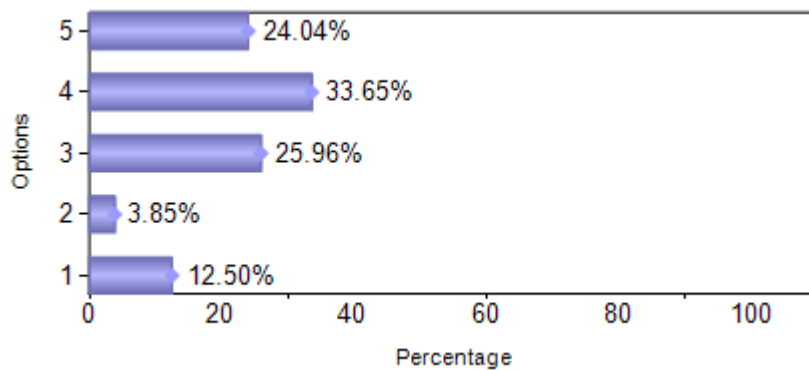
2) Lab classes / courses are given equal importance to



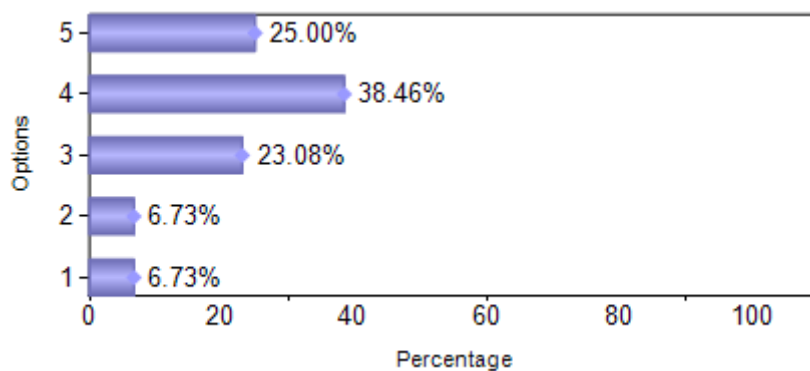
3) Scheme of valuation is discussed after each test / examination



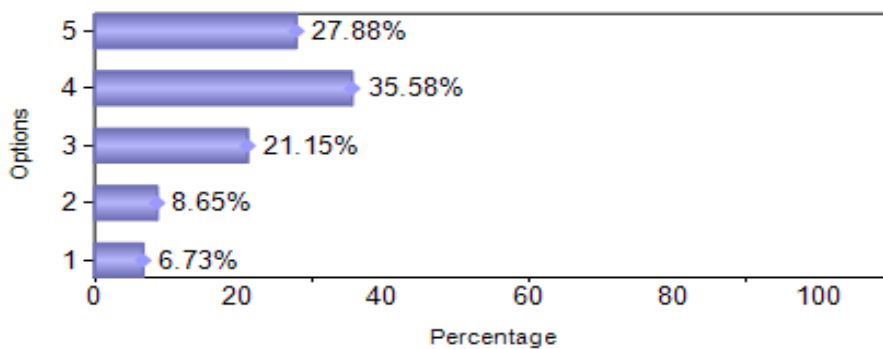
4) Electives are offered in terms of relevance to specialization



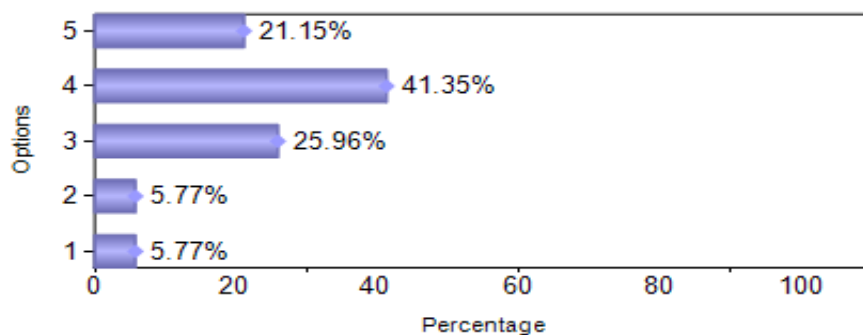
5) Faculty gives us enough reference books to refer to in the subject



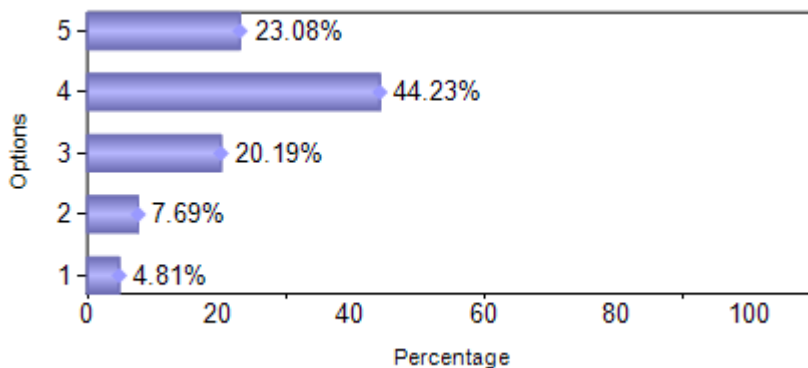
6) Syllabus is overloaded and hence rushed with in class.



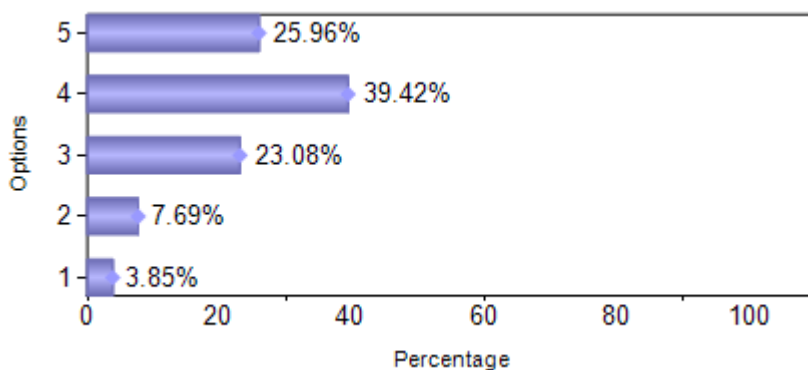
7) Value based learning is integrated in the curriculum and prefinal ethics is discussed in class.



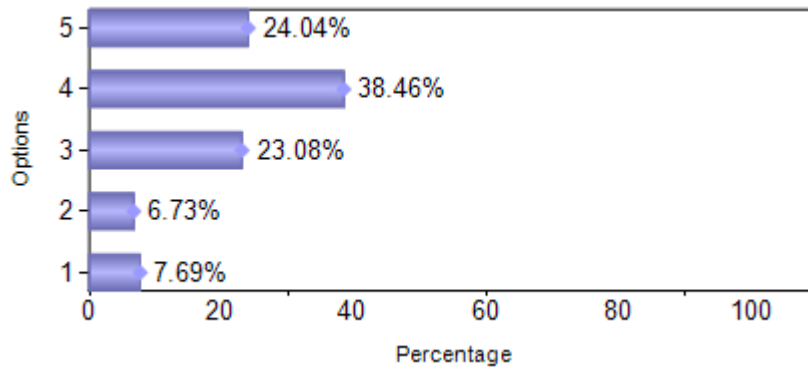
8) Curriculum approach is inter-disciplinary for approach.



9) Assignments are given in time and rubrics shared for assessment



10)Curriculum delivery is done by sharing course handout in time, rubrics are explained



|

|

|

|

|

|

